

MPB 1600 SERIES CASCADE DUAL TUBE VETERINARY GAS FLOWMETER

GENERAL INFORMATION

The MPB Series 1600 Dual Tube Cascade Flowmeter is ideal for measuring the instantaneous flow rate of virtually any process gas.

The MPB Series 1600 Dual Tube Cascade Flowmeter is designed for applications where a high accuracy is required across conditions where the normal 10:1 turndown ratio needs to be exceeded, particularly where high accuracy is required for the first readings, which can be displayed on the first flow tube.

A typical installation, for example, would be left hand flow tube 0.1-1 L/min cascading to 1-10 L/min regardless of process medium, or operating conditions.

The flow tubes supplied with this instrument are fully compliant to ISO 5358 and BS4272 being electrically conductive and are fitted with contact devices to earth the flow tubes through to the mounting studs and chassis to prevent any static build up.

The MPB Series 1600 Dual Tube Cascade Flowmeter has rear facing connection Rp ¼ (BSPPF) for inlet and right-hand side top outlet.



FEATURES

- EASY IN-SITU TUBE REMOVAL AND RE-INSTALLATION.
- PHOTO LUMINESCENT BACKING TO PROVIDE A DEGREE OF BACK LIGHTING IN THE EVENT OF A POWER FAILURE.
- ACCURACY OF MEASUREMENT IS CLASS 2.5 VDI/VDE 3513, OR BETTER.
- EASY TO READ SCALES.
- COLOUR CODING TO INTERNATIONAL STANDARDS. (SPECIFY WHEN ORDERING)

MPB 1600 SERIES CASCADE DUAL TUBE VETERINARY GAS FLOWMETER

Chassis: Anodised Aluminium to BSEN12373/AA25

End Blocks: Achromed Aluminium

Process Connections:

Inlet – rear: Rp 1/4 (BSPPF)
 Outlet – side: Rp 1/4 (BSPPF) or ISO 23mm taper outlet.
(Please state when ordering)

Cover: Polycarbonate

Seals: Nitrile, Viton, EPDM

Metering Tube: Borosilicate glass

Scale: Permanently fired black ceramic

Plumb Bob Float: Red Anodised aluminium

Weight: 700 grams

Maximum Working Pressure:

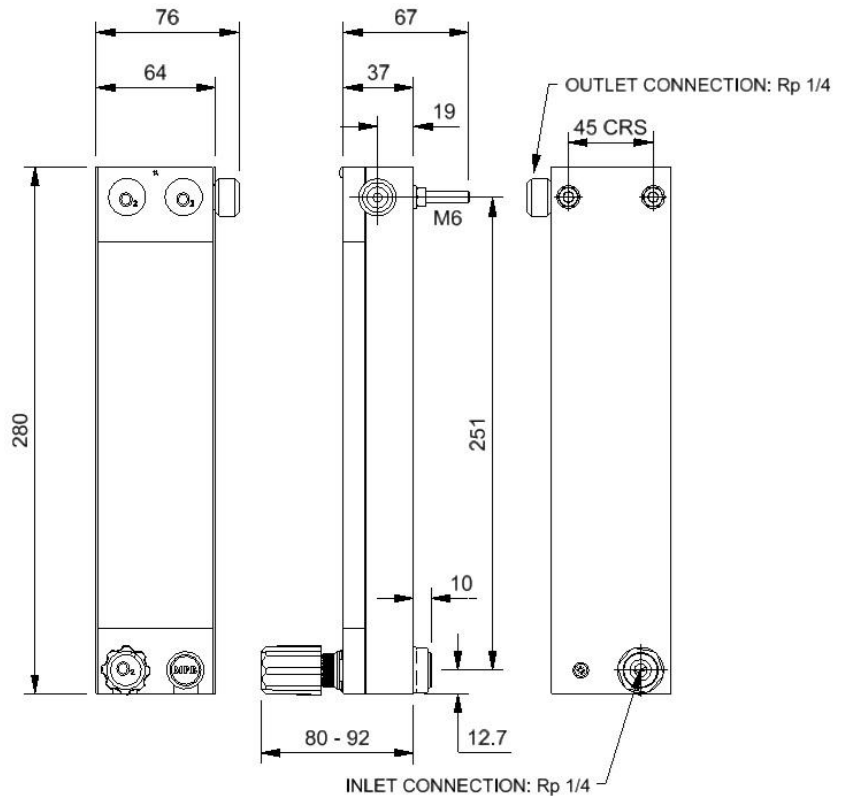
Gas: up to 20 bar g (non-shock)
 Liquid: up to 20 bar g (non-shock)

Maximum Working Temperature: 60°C Nitrile
 100°C Viton

Accuracy: Class 2.5 VDI/VDE 3513

STANDARD RANGES

0.1-1 L/min Air
1-10 L/min Air
0.1-1 L/min O ₂
1-10 L/min O ₂
0.1-1 L/min N ₂ O
1-10 L/min N ₂ O



Customised flow ranges are available. Please consult MPB Industries to select the required flow range for the process fluid used.

MPB Industries Ltd - Designers and Manufacturers of Scientific and Process Control Instrumentation

Part of the SDI Group of companies

Unit 1 Branbridges Ind Est, East Peckham, Kent TN12 5HF, UK, Tel: +44 (0)1622 872401
 mail@mpbflowmeters.com, www.mpbflowmeters.com